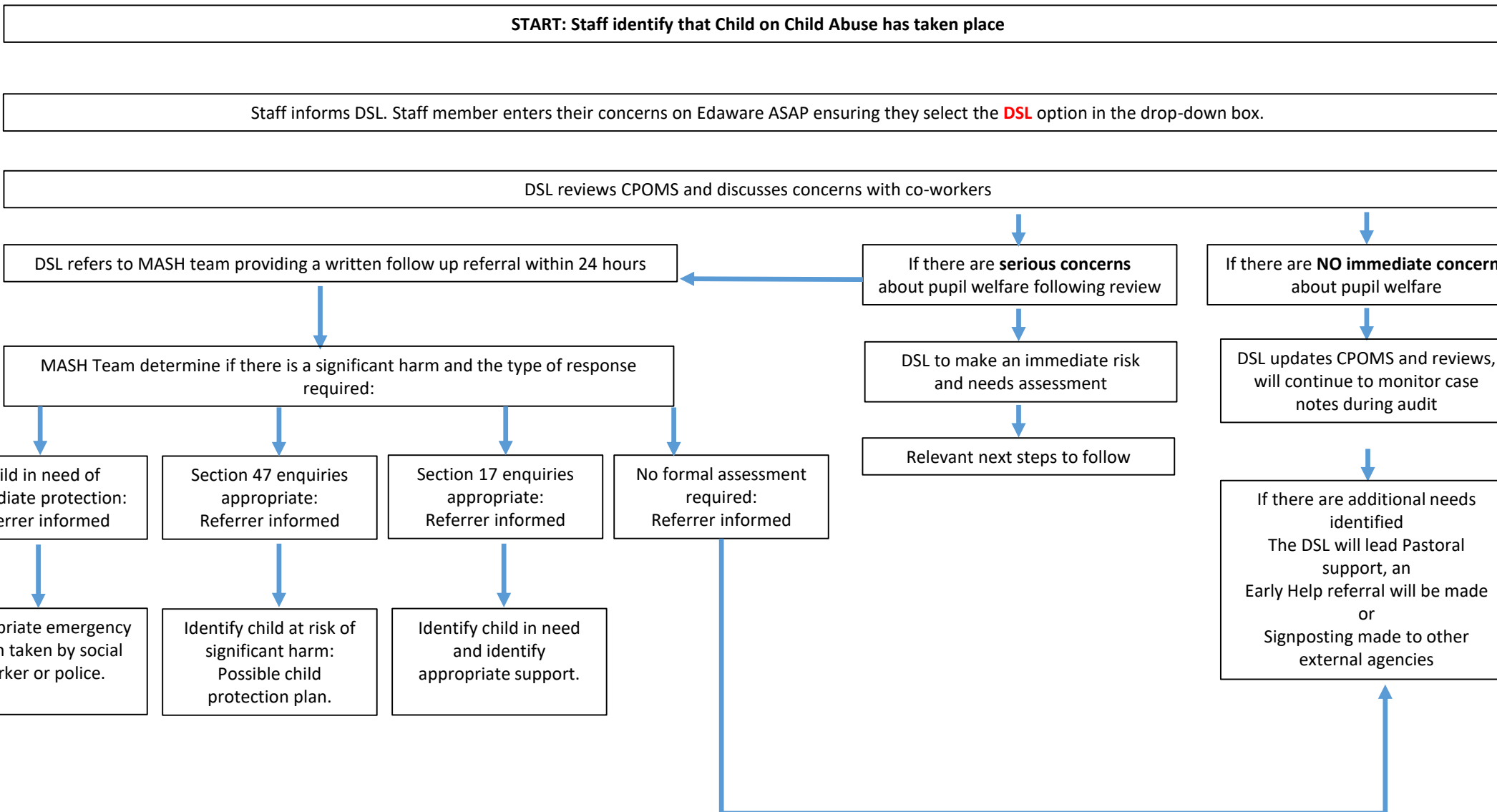
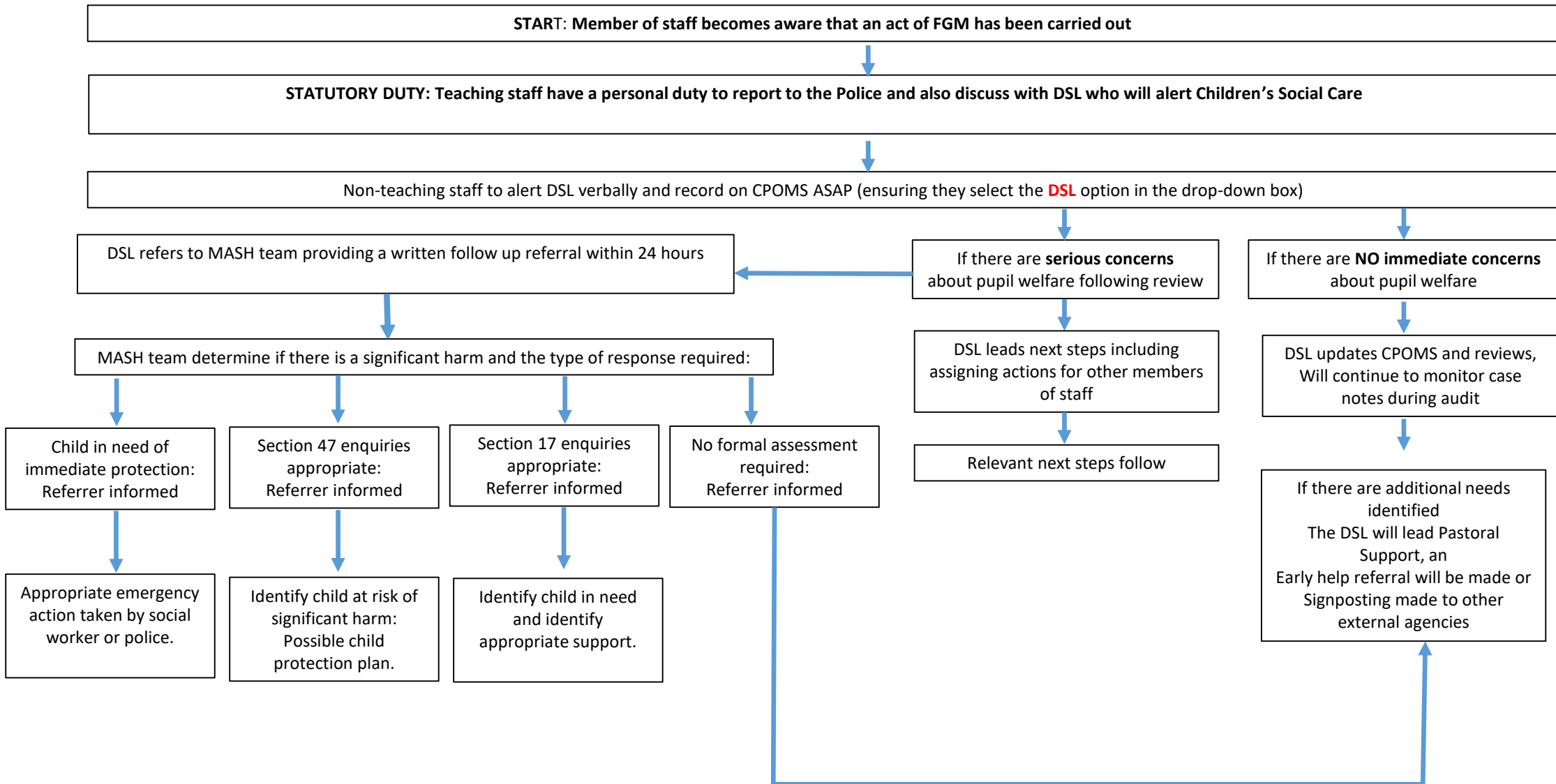


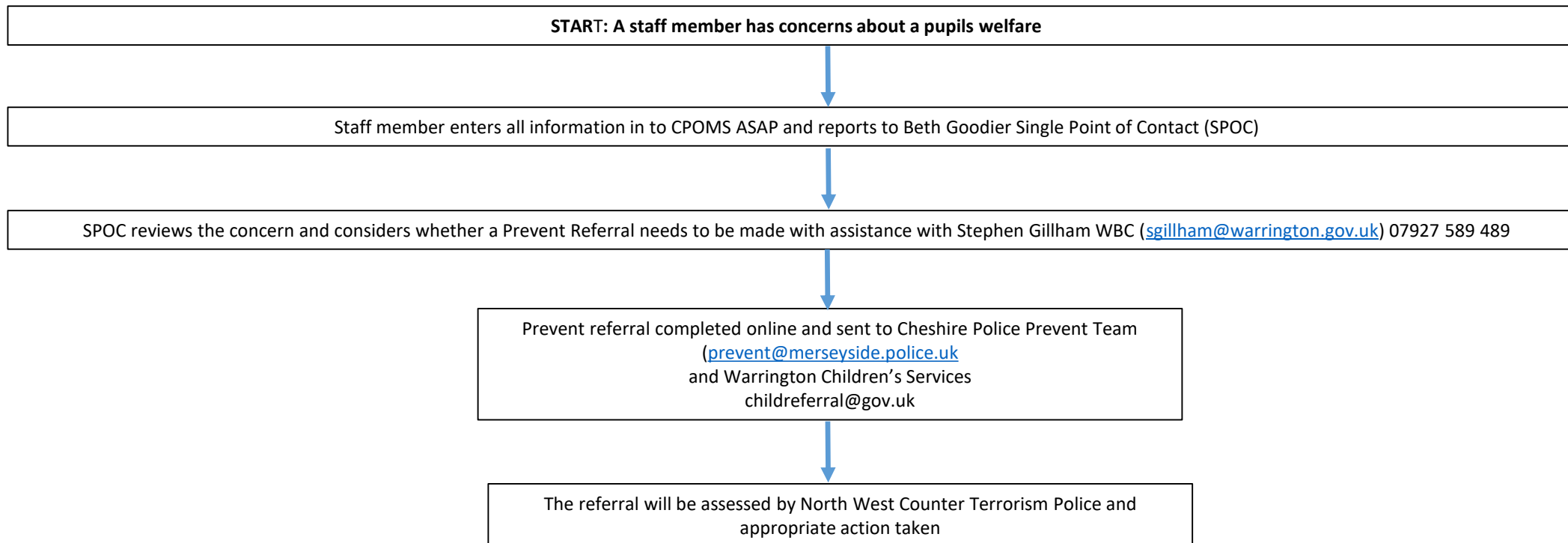
Decision Tree #1 – Child on Child Abuse



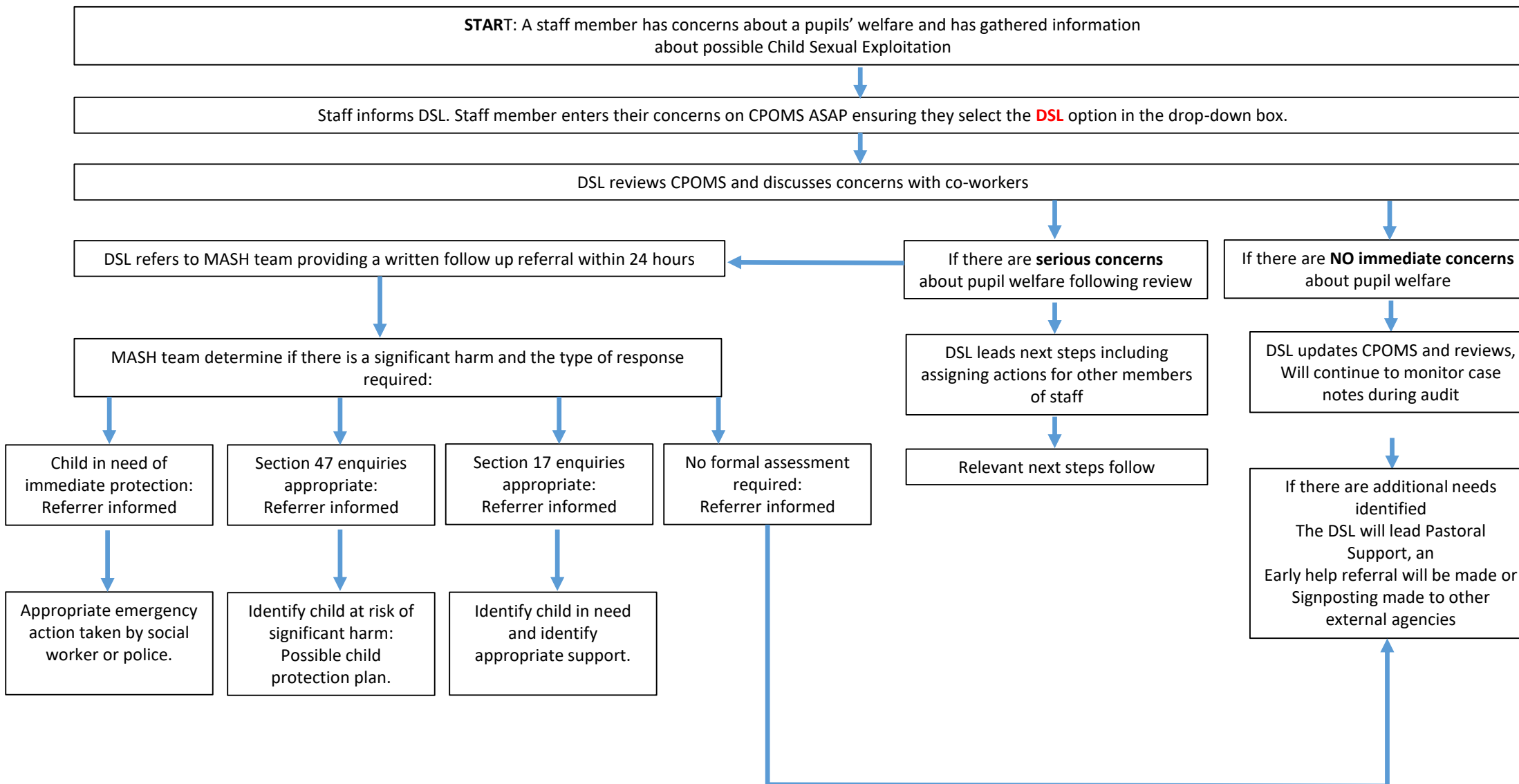
Decision Tree #2 - Female Genital Mutilation (FGM)



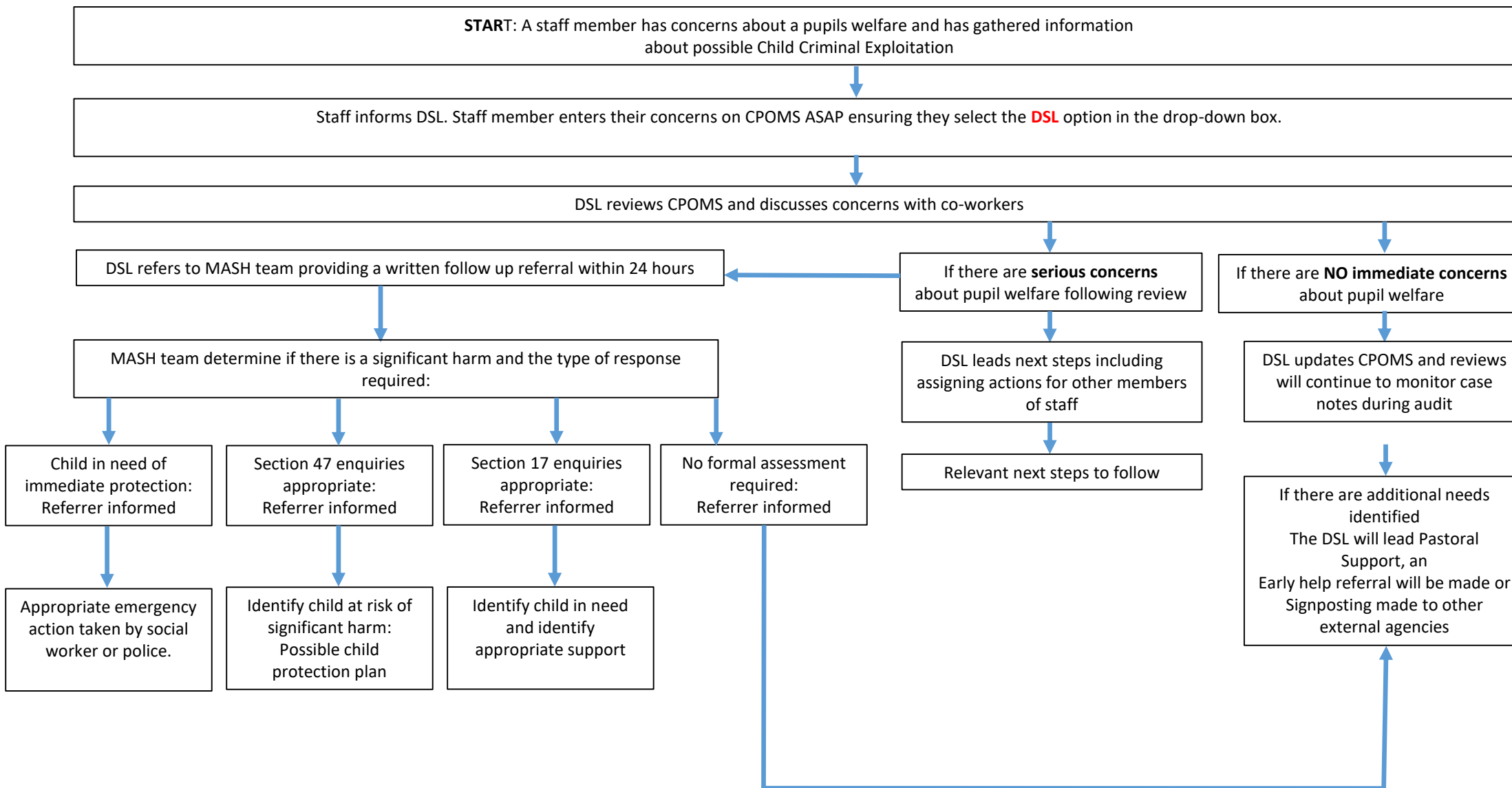
Decision Tree #3 – Preventing radicalisation



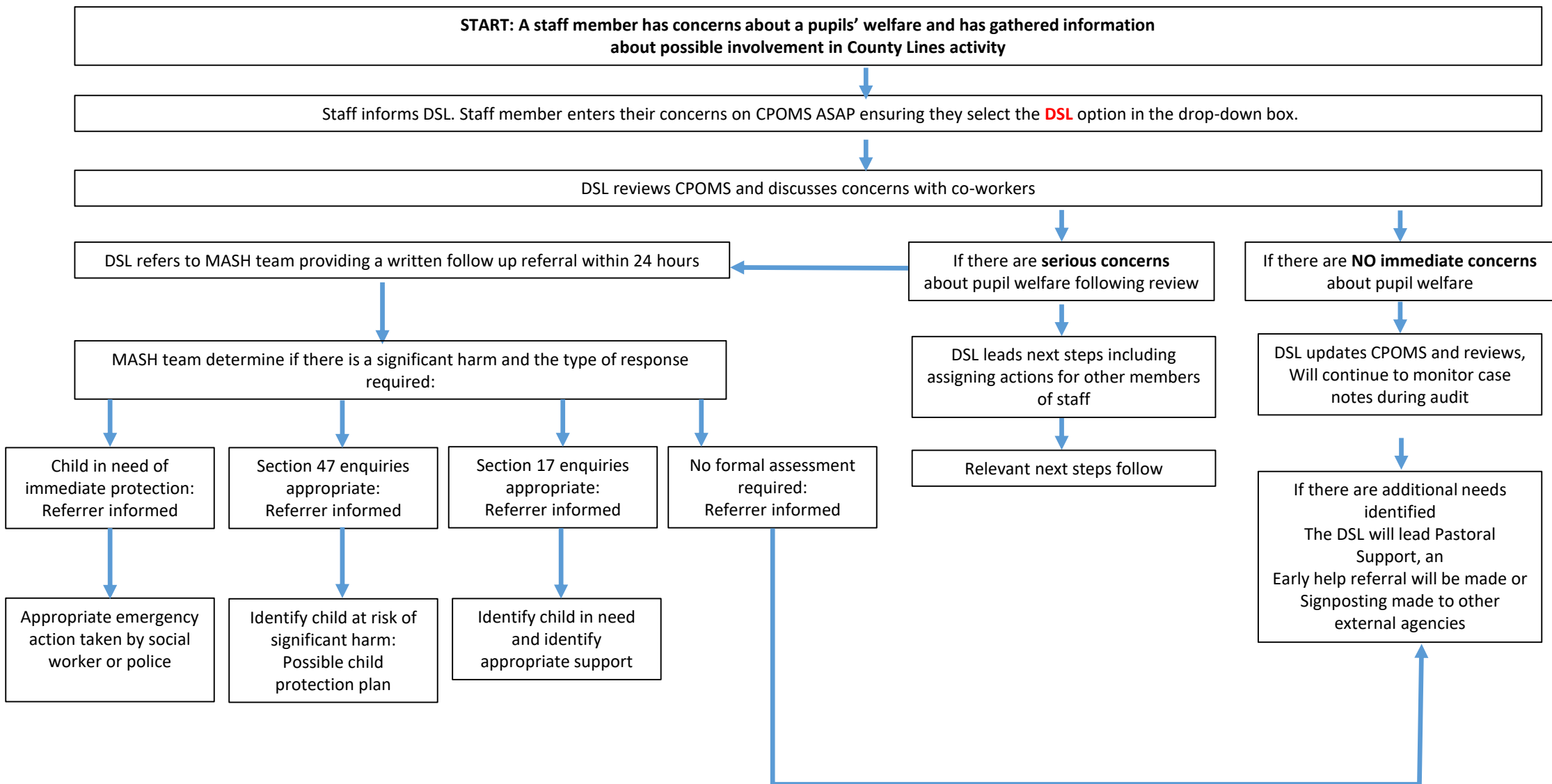
Decision Tree #4 – Child Sexual Exploitation



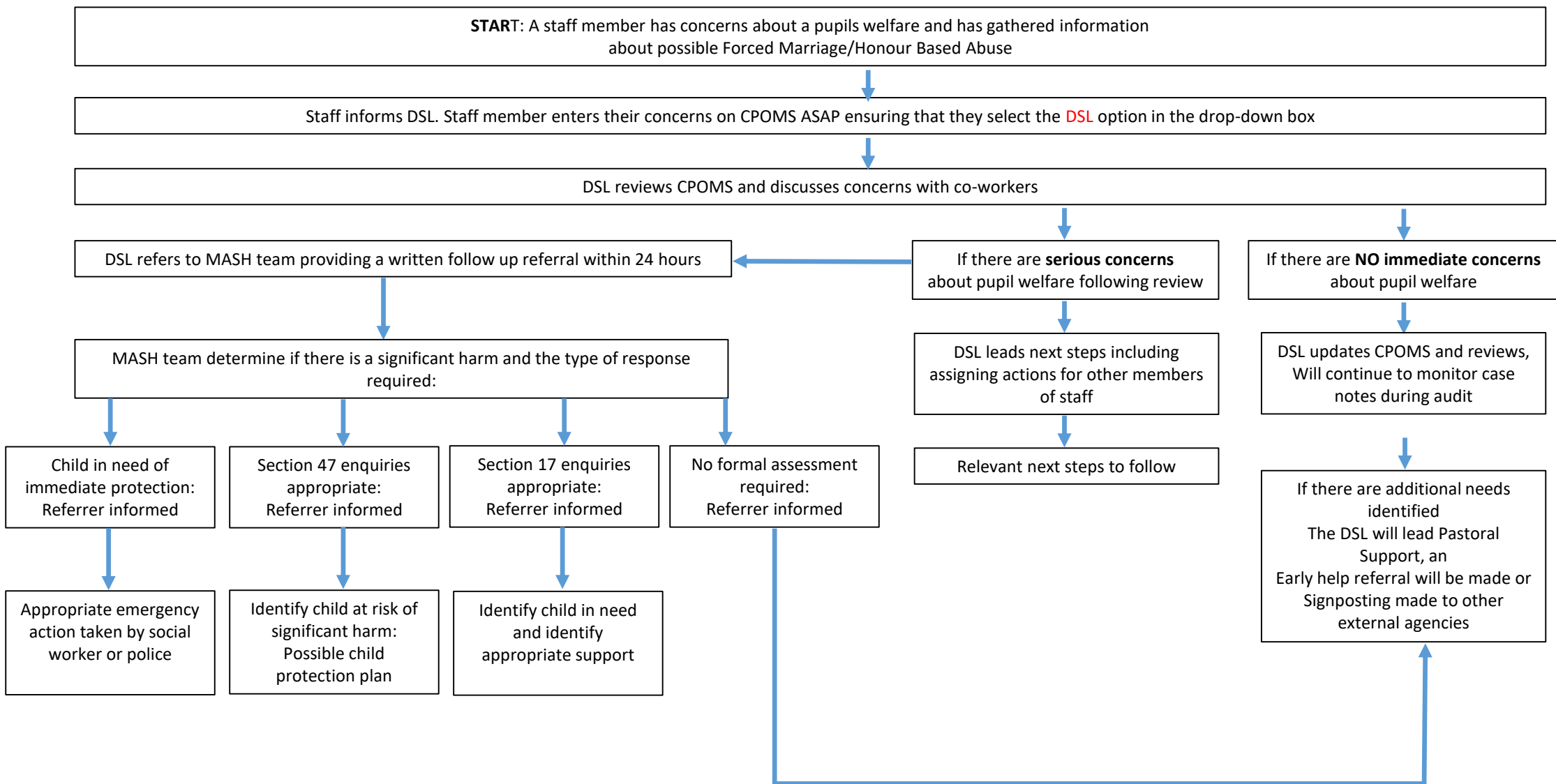
Decision Tree #5 – Child Criminal Exploitation



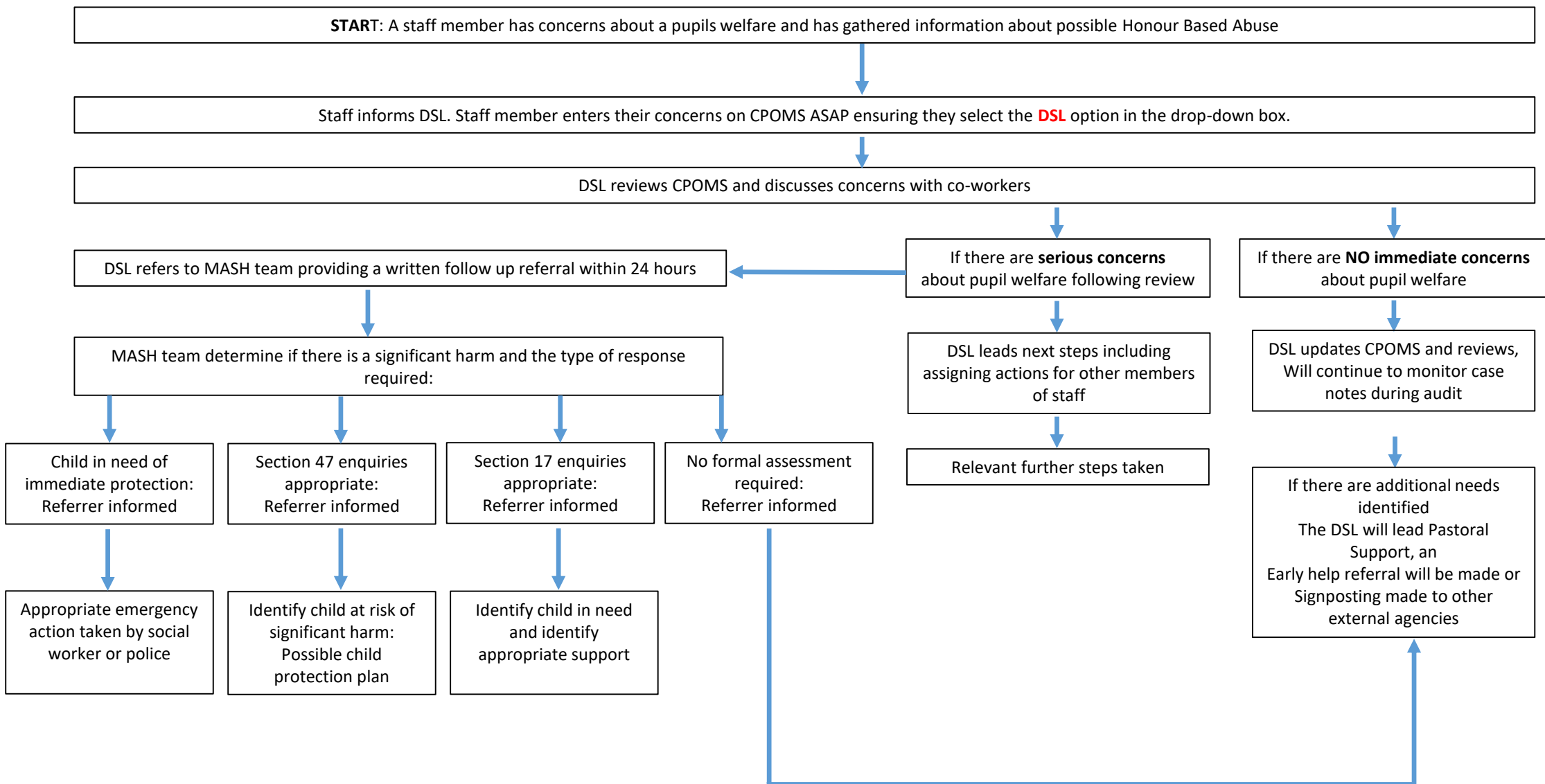
Decision Tree #6 – County Lines



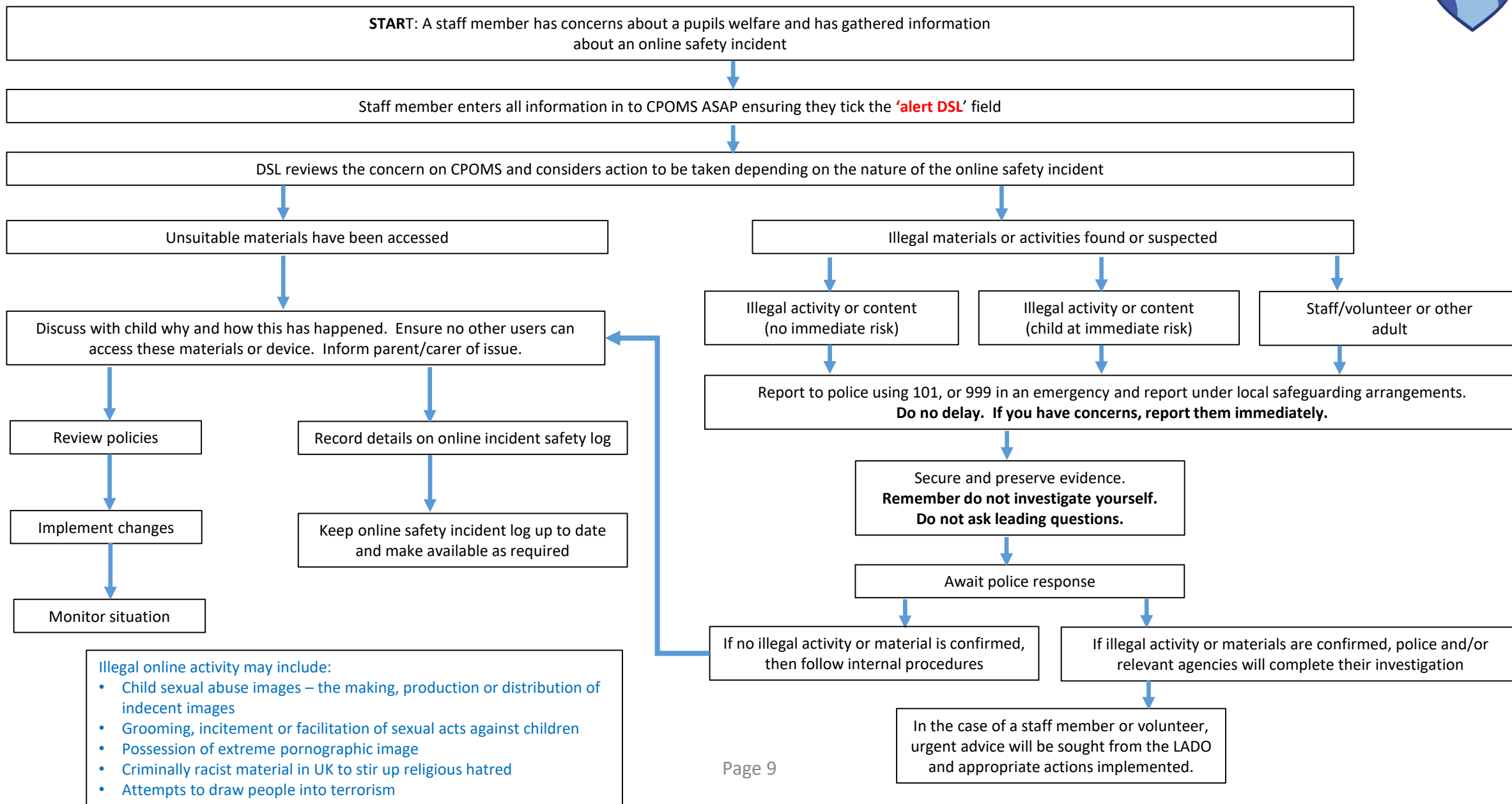
Decision Tree #7 – Forced Marriage



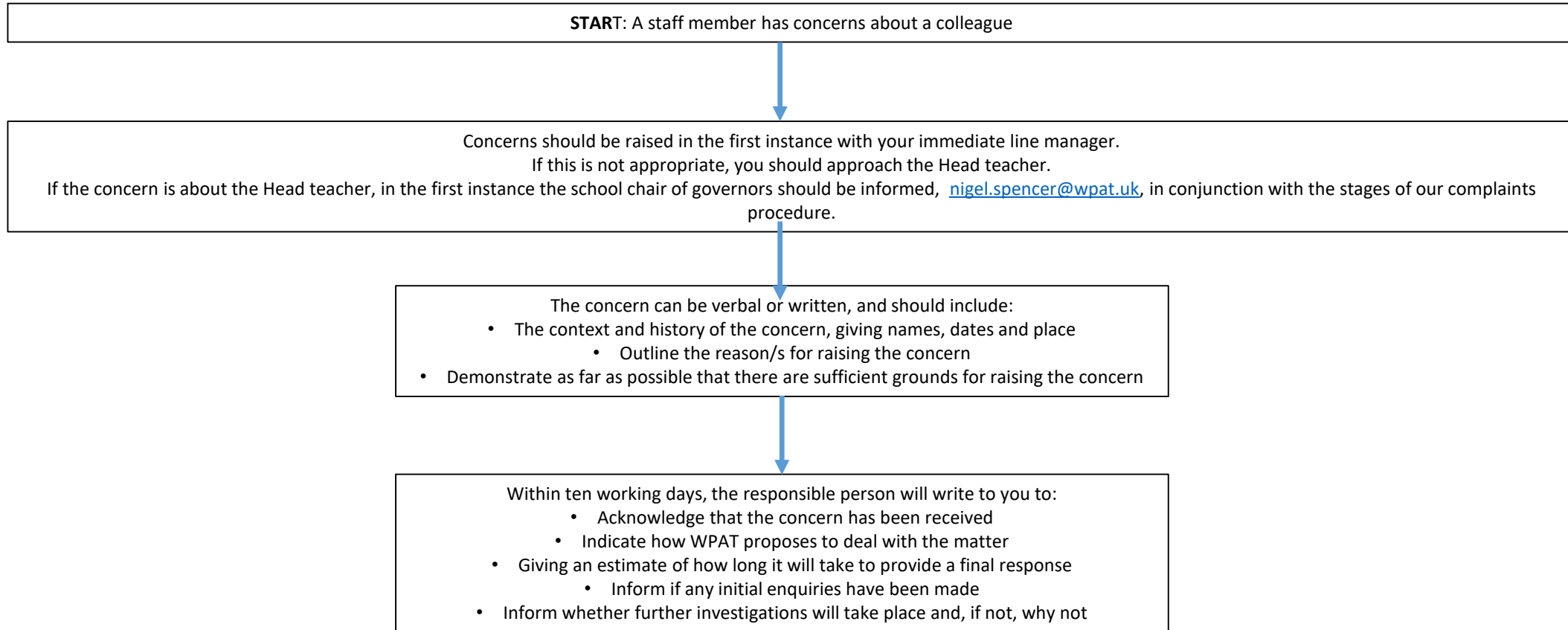
Decision Tree #8– Honour Based Abuse



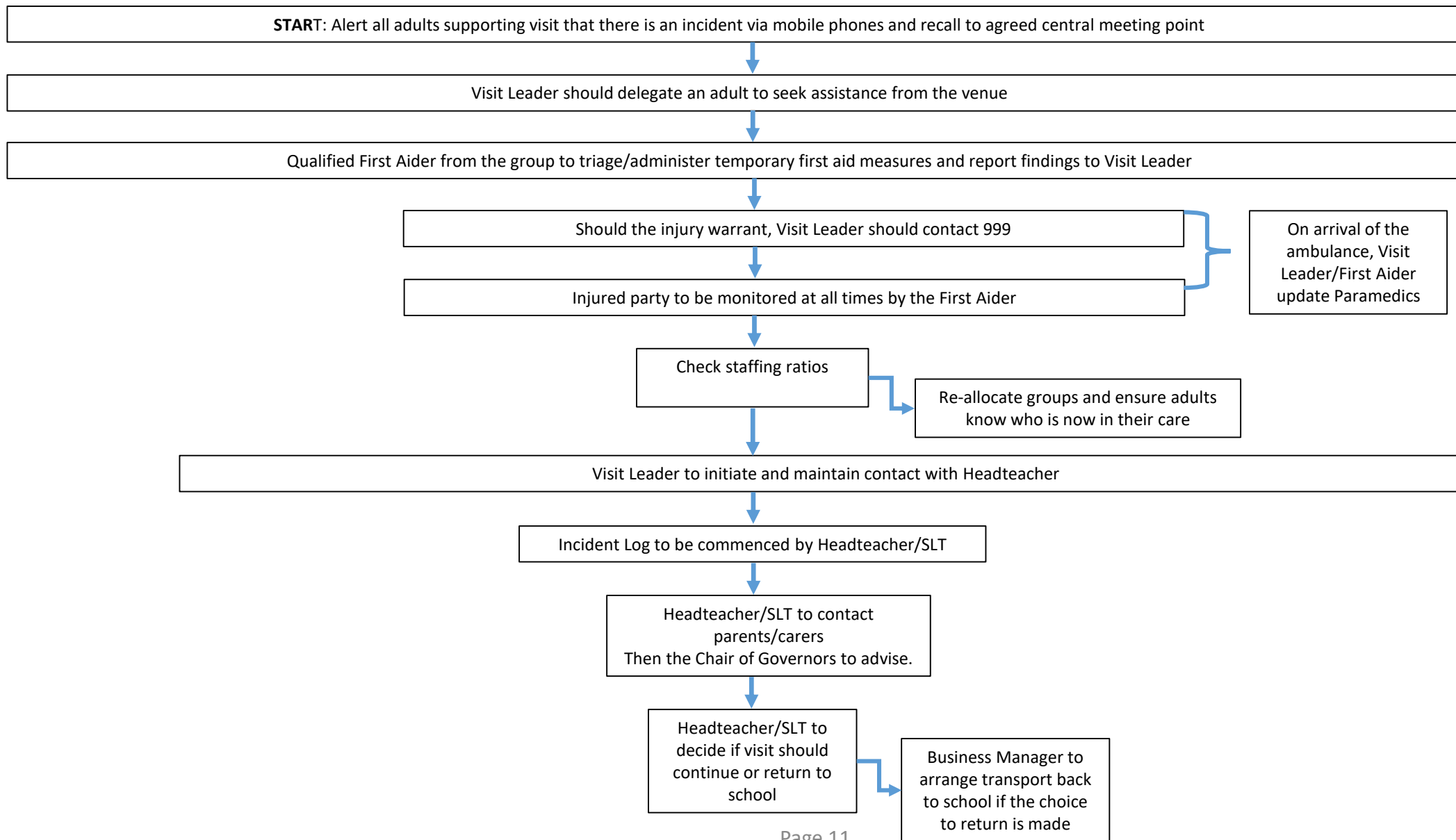
Decision Tree #9 – Online Safety Incident



Decision Tree #10 - Whistleblowing



Decision Tree #11 – Educational Visits



Decision Tree #12 – Visitors to School



START: Visitors should enter through the main school entrance and report to the office

Visitors are subject to DBS check. Office staff will inform visitor if they require a DBS check.

Visitors will be asked to sign into the Inentry electronic system and must read all notices and Visitor Safeguarding leaflet.

Visitors must wear their visitor badge and agency badge at all times.
Visitors will be challenged by staff if a visitor badge is not visible.

Visitors should be will be greeted by staff member and escorted to their point of contact. Their contact will be responsible for them while they are on site.

At the end of the visit, the staff member will escort the visitors to the main entrance and asked to sign out on Inentry