

Key Stage 1 Personal Development Wider Opportunities for Enrichment - linking to British Values, Schools Values, SMSC, Careers

1 Teaching

Personal Development – Matched to all subjects on Intent Document

Autumn:

Knowsley Safari Park LO: To identify and name a variety of common animals including, fish, amphibians, reptiles, birds and mammals

Spring:

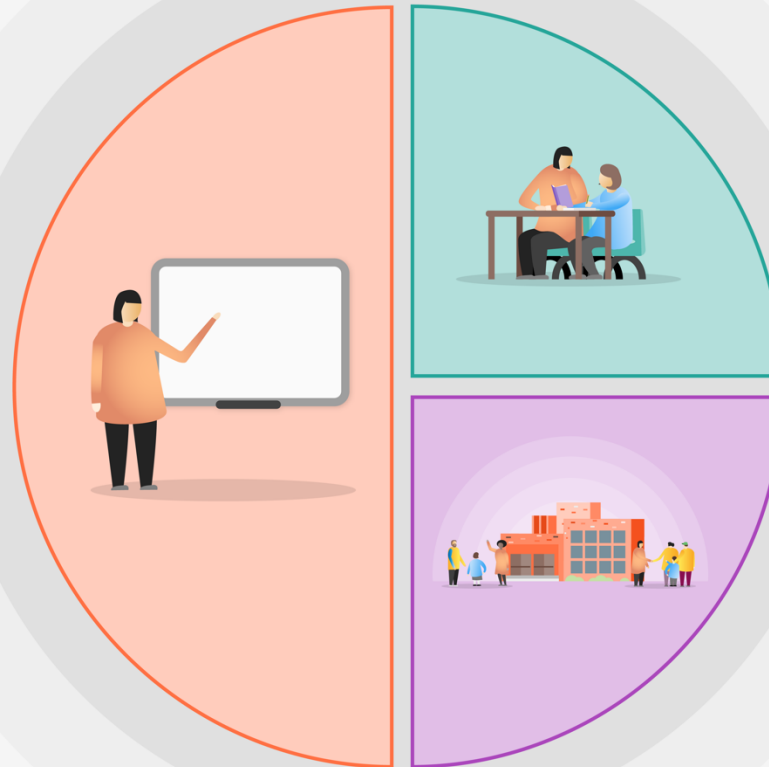
Fire of London Workshop LO: To explore events beyond living memory
 Ness Gardens Visit

Imman Visit LO: What do Muslims believe about Allah?

Southport Beach LO: To use simple fieldwork and observational skills to study the geography and key human and physical features of the environment

Summer:

Chester Zoo LO: To understand the impact of conservation on local area



2 Targeted academic support

Autumn:

Well-Being week

Spring:

Mental Health Week
 Relaxation and Meditation
 Safer Internet Week Exploring respect and relationships online
 PCSO Visit

Summer:

PCSO Visit online safety, police careers
 Well-Being week

3 Wider strategies

Autumn:

Team Day World Cup, NSPCC Pants/Kidsafe School Council, Football Club, Walk to School Mindfulness Club, Eco Warriors, Christmas Card Competition, Nativity Performance, Language Ambassadors, Mental Health Champions

Spring:

Mindfulness Club, Gymnastic Club
 Dress to Express Day

Summer:

Sports Day, On Site Swimming Lessons
 Unicef RRSA

Guiding Principle

To deliver a first class education through partnership, innovation, school improvement and accountability